



VTEC® Track-Etch™ Membrane Filter Series

Absolute Rated Polyester Track-Etch Membrane Filter Cartridges

This pleated filter element is constructed of a double layer of Track-Etch polyester membrane for use in critical filtration applications. The filters are pre-flushed and integrity tested to ensure the optimal level of contamination removal.

Filter Features–Benefits

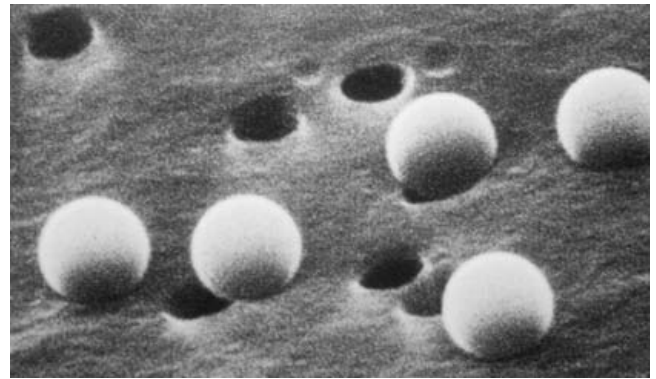
- Integrity testable
- 12.5 ft² (1.2m²) of Track-Etch membrane per 10" element.
 - High flow rates
 - High resistivity, low TOC levels
- Sieving capture mechanism results in precise, consistent and reliable filtration
- Pre-flushed, integrity tested and serialized
- Meets USP 24 Class VI biological test for plastics
- All polyester construction
- Sanitizable with steam, hydrogen peroxide, hot water and other chemical sterilants
- Cyst removal exceeding ANSI/NSF standard 53 for drinking water
- Validation guide
- Pore size, lot and serial number are stamped on each filter element for identification and traceability.

Filter Specifications

Media:	Polyester Track-Etch membrane
Inner core, end caps, cage:	Polyester
Support layer	Polyester
Gasket/O-Rings:	Buna-N, EPDM, Silicone, Viton, Teflon Encapsulated Viton O-Rings
Micron ratings:	0.05, 0.1, 0.2, 0.4, 0.6, 1.0µm

Dimensions and Operating Parameters

Nominal lengths:	9.75" 10", 20", 30", 40" (24.7, 25.4, 50.8, 76.2, 101.6 cm)
Outside diameter:	2.7" (6.9 cm)
Inside diameter:	1.0" (2.54 cm)
Surface area:	12.5 sq. ft. (1.2m ²) – 10 inch element
Maximum operating temperature:	176°F (80°C)
Maximum differential pressure:	75 psid @ 70°F (5.5 bar @ 21°C) 5 psid @ 176°F (0.3 bar @ 80°C)



0.4 µm Track-etch membrane with 5 µm latex bleeds

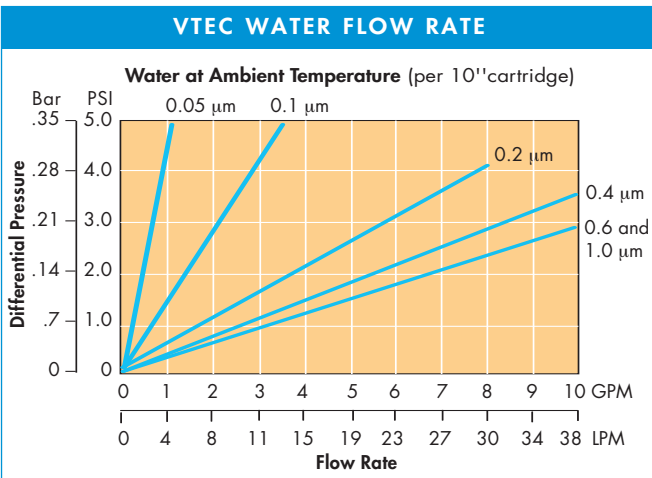
Applications

- Semiconductor ultrapure water and chemicals
- Pharmaceutical water
- Cosmetics water
- Solvent filtration
- Bottled water

VTEC Nomenclature Information

<p>VTEC</p> <p>Filter Type VTEC Series Filters</p>	<p>0.05</p>	<p>-9.75</p> <p>Nominal Length (inches)</p> <p>-9.75 -10 -20 -30 -40</p>	<p>P7</p>	<p>S</p> <p>Gasket or O-Ring</p> <p>S Silicone B Buna-N E EPDM V Viton T Teflon encap. Viton (O-Rings only)</p>
<p>Retention Rating (microns)</p> <p>0.05 0.1 0.2 0.4 0.6 1</p>		<p>End Configuration</p> <p>P Double Open End P2 226/Flat Single Open End P3 222/Flat Single Open End P7 226/Fin Single Open End P8 222/Fin Single Open End</p>		

Example: VTEC 0.05-9.75 P7S



VTEC Rinse-Up Performance

Typical Results per 10" Cartridge*

Parameter	Quick Flush		Background Flush	
	Level	Flush Volume	Level	Flush Volume
Resistivity	18 MΩ-cm	< 334 Gal. (1264 L)	18 MΩ-cm	< 1,300 Gal. (4,920 L)
TOC	< 3 ppb	< 70 Gal. (265 L)	< 2 ppb	< 250 Gal. (946 L)
Particles > pore rating	< 5/mL	< 35 Gal. (133 L)	< 1/mL	< 10 hrs

*Cartridges flushed before tests. Contact Graver Technologies for test conditions.

FLOW TECH CORPORATION

(Toll Free) **877.375.1290**

7601 Stadium Drive Kalamazoo, MI 49009

www.flowtechfilters.com

DISTRIBUTED BY:

All information and recommendations appearing in this bulletin concerning the use of products described herein are based on tests believed to be reliable. However, it is the user's responsibility to determine the suitability for his own use of such products. Since the actual use by others is beyond our control, no guarantee, expressed or implied, is made by Graver Technologies as to the effects of such use or the results to be obtained. Graver Technologies assumes no liability arising out of the use by others of such products. Nor is the information herein to be construed as absolutely complete, since additional information may be necessary or desirable when particular or exceptional conditions or circumstances exist or because of applicable laws or government regulations.

VTEC and Track-Etch are trademarks of Graver Technologies, LLC.

