



Fulflo® FE Filter Vessels

FE Model Cartridge Filter Vessels Designed for Economical Filtration of Liquids and Gases

The FE Filter Vessel Series accommodates double-open-end (DOE) and single-open-end (SOE) filter cartridges in 10 in, 20 in and 30 in lengths.



Benefits

- Single O-ring design closure assures quick, positive cover sealing
- Swing bolts with eye nuts for fast, easy opening and closing of cover
- Maximum design pressure is 150 psig (10.3 bar) at 450°F* (232°C) and 200 psig at 100°F (38°C) plus full vacuum
- Buna-N O-ring standard with EPR, Viton* and fluoropolymer available
- Dual purpose cartridge seats for use with double open end and 2-222 O-ring single open end cartridges
- ASME Code UM stamp is standard (U stamp is optional)
- Threaded vent and drain connections
- Adjustable leg height
- Threaded or flanged inlet and outlet
- Side inlet; cover opens without disconnecting piping
- Side inlet, bottom outlet and crevice-free welded design provide a smooth interior for easy wash-out and cleaning

Applications

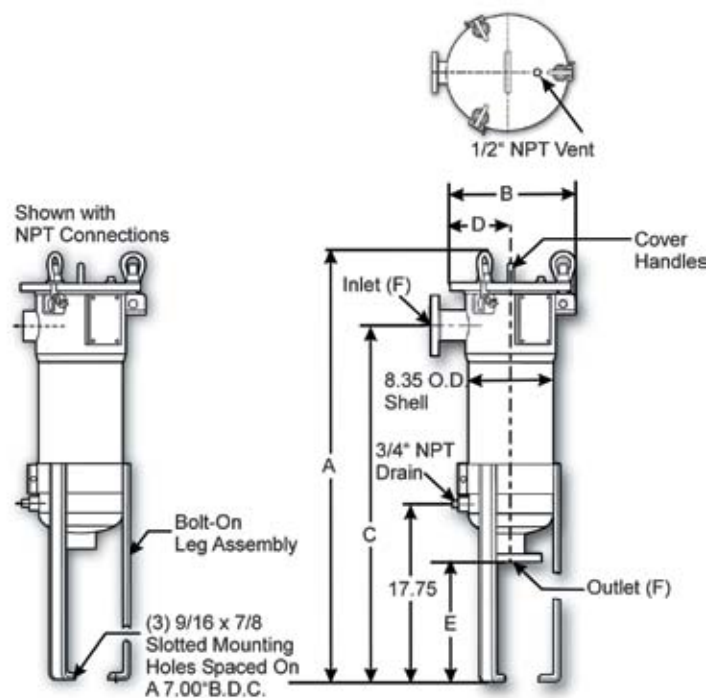
- Potable Water
- Process Water
- Coatings
- Lubricants
- Coolants
- Cutting Oils
- Solvents

Fulflo® FE Filter Vessels

Design Specifications

Model	No. & Length of Cartridges (in)	Aqueous Flow† (gpm)	Typical Dimensions (in)	Typical Dimensions (in)						Shipping Weight (lbs)
				A	B	C	D	E	F	
FE6-1-2	6 (10)	30	33.00	12.25	25.56	5.75	13.19	2 NPT	82	3.6
FE6-1-2F	6 (10)	30	33.00	14.50	25.56	8.00	12.00	2 NPS	90	3.6
FE6-2-2	6 (20)	60	43.06	12.25	35.63	5.75	13.19	2 NPT	87	5.4
FE6-2-2F	6 (20)	60	43.06	14.50	35.63	8.00	12.00	2 NPS	95	5.4
FE6-3-2	6 (30)	90	53.13	12.25	45.69	5.75	13.19	2 NPT	92	7.8
FE6-3-2F	6 (30)	90	53.13	14.50	45.69	8.00	12.00	2 NPS	100	7.8
FE6-3-3F	6 (30)	90	53.13	14.50	45.69	8.00	11.75	3 NPS	110	7.8

† Actual rate is dependent on fluid viscosity, micron rating, contaminant and media type. Consult flow charts for each application.



Ordering Information

■	FE	6	■	■
Material	Model	Number of Column	Number of 10 in Cartridges/Column	Inlet/Outlet Flange Size
None = Carbon 4L = 304L Stainless Steel 6L = 316L Stainless Steel	FE	6	1 2 3	2 3 No F = NPT



FLOW TECH
CORPORATION

(Toll Free) 877.375.1290
7601 Stadium Drive Kalamazoo, MI 49009
www.flowtechfilters.com